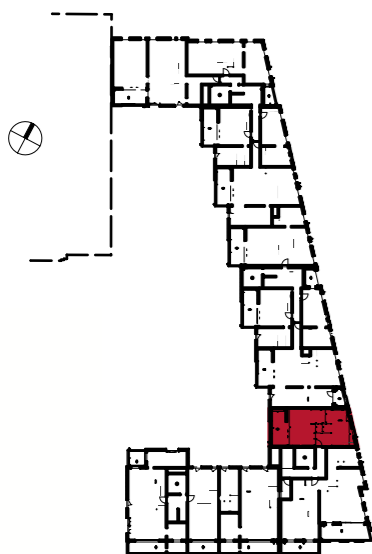




ETAGE	TYPE	LOGEMENT
NIV. 4	T2	E2 401



SURFACES HABITABLES

CHAMBRE	13.55 m ²
CUISINE	6.46 m ²
SALON / SEJOUR	23.63 m ²
ENTREE	5.55 m ²
RGT	1.40 m ²
SdB	4.98 m ²
WC	2.10 m ²
TOTAL SURFACES HABITABLES DE L'ETAGE	57.67 m²
TOTAL SURFACES HABITABLES DU LOGEMENT	57.67 m²

SURFACES UTILES EXTERIEURES

BALCON	13.13 m ²
TOTAL UTILES EXTERIEURES	13.13 m²
DATE : 23/08/2011	

