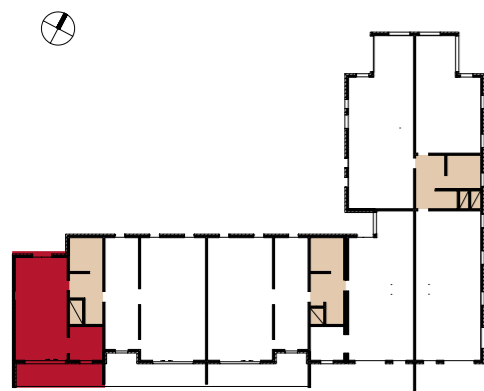




ETAGE	TYPE	LOGEMENT
NIV. 3	T2	A1 302



SURFACES HABITABLES

CHAMBRE	13.34 m ²
CUISINE	9.23 m ²
HALL	5.35 m ²
SEJOUR	20.47 m ²
SdB / WC	4.89 m ²
TOTAL SURFACES HABITABLES DE L'ETAGE	53.28 m²
TOTAL SURFACES HABITABLES DU LOGEMENT	53.28 m²

SURFACES UTILES EXTERIEURES

BALCON	14.44 m ²
TOTAL UTILES EXTERIEURES	14.44 m²
DATE : 25/02/2009	

