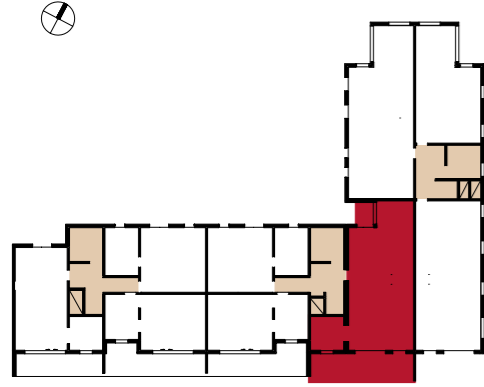




ETAGE	TYPE	LOGEMENT
NIV. 2	T3	A2 201



SURFACES HABITABLES

CHAMBRE1	14.15 m ²
CHAMBRE2	10.06 m ²
CIRCUL.	4.75 m ²
CUISINE	8.93 m ²
HALL	3.52 m ²
RGT	1.60 m ²
SEJOUR	33.46 m ²
SdB	4.84 m ²
WC	2.47 m ²
TOTAL SURFACES HABITABLES DE L'ETAGE	83.78 m²
TOTAL SURFACES HABITABLES DU LOGEMENT	83.78 m²

SURFACES UTILES EXTERIEURES

BALCON	3.00 m ²
BALCON	15.12 m ²
TOTAL UTILES EXTERIEURES	18.12 m²

DATE : 25/02/2009

